

# NAR Web Server Issue

## Instructions to insert references links in a Word document

### I. Filter and Style files

Download the attached modified Filter file 'NAR\_PubMed.enf' to your computer and save it in Program Files/Endnote/Filters. Similarly, download the attached Style file 'Nucleic Acids Res Modified.ens' and save it in Program Files/Endnote/Styles.

Please note: you will not be able to use an existing Endnote library to add PubMed, PubMed Central and doi links to your reference list. This is because the default PubMed filter removes the field tags necessary to import the links. Instead you will need to download again all your references from PubMed and save them to a new Endnote library. DO NOT import the references to your default Endnote library as duplicate references will be removed in the process. The old references without tags will be preserved while the new references with tags will be discarded.

### II. Download references from PubMed

1 - Select your references

2 - Send the selected references to the Clipboard

The screenshot shows the PubMed search results page. At the top, it says 'Display Settings: [x] Summary, 20 per page, Sorted by Recently Added'. Below that, it says 'Results: 1521 to 1532 of 1532 Selected: 5'. A list of search results is displayed, each with a checkbox and a red circle containing the number '1' next to the first result. The first result is 'GiardiaDB and TrichDB: integrated genomic resources for the eukaryotic protist pathogens Giardia lamblia and Trichomonas vaginalis'. To the right of the list, a 'Send to' dialog box is open, with a red circle containing the number '2' next to the 'Send to' button. The dialog box has a 'Choose Destination' section with radio buttons for 'File', 'Clipboard', 'Collections', 'E-mail', and 'Order'. The 'Clipboard' option is selected. Below this, there is an 'Add items' section with an 'Add to Clipboard' button. The dialog box also has a 'Find items' button and a 'Search details' section with a 'Search' button. At the bottom, there is a 'Recent activity' section with a 'Your browser' button.

### 3 - When you have added all your references, open the Clipboard

Display Settings: ☒ Summary, 20 per page, Sorted by Recently Added

Send to: ☒ Clipboard: 20 items

5 items were added to the Clipboard.

Clipboard items will be lost after eight hours of inactivity.  
The maximum number of Clipboard items is 500.

Results: 1521 to 1532 of 1532

1521. [GiardiaDB and TrichDB: integrated genomic resources for the eukaryotic protist pathogens Giardia lamblia and Trichomonas vaginalis.](#)  
Aurrecoechea C, Brestelli J, Brunk BP, Carlton JM, Dommer J, Fischer S, Gajria B, Gao X, Gingle A, Grant G, Harb OS, Heiges M, Innamorato F, Iodice J, Kissinger JC, Kraemer E, Li W, Miller JA, Morrison HG, Nayak V, Pennington C, Pinney DF, Roos DS, Ross C, Stoeckert CJ Jr, Sullivan S, Treatman C, Wang H.  
Nucleic Acids Res. 2009 Jan;37(Database issue):D526-30. Epub 2008 Sep 29.  
PMID: 18824479 [PubMed - indexed for MEDLINE]  
[Related articles](#) [Free article](#) [Item in clipboard](#)

1522. [RiceGeneThresher: a web-based application for mining genes underlying QTL in rice genome.](#)  
Thongjuea S, Ruanjaichon V, Bruskiwich R, Vanavichit A.  
Nucleic Acids Res. 2009 Jan;37(Database issue):D996-1000. Epub 2008 Sep 27.  
PMID: 18820292 [PubMed - indexed for MEDLINE]  
[Related articles](#) [Free article](#) [Item in clipboard](#)

1523. [Zinc Finger Database \(ZiFDB\): a repository for information on C2H2 zinc fingers and engineered zinc-finger arrays.](#)  
Fu F, Sander JD, Maeder M, Thibodeau-Beganny S, Joung JK, Dobbs D, Miller L, Voytas DF.  
Nucleic Acids Res. 2009 Jan;37(Database issue):D279-83. Epub 2008 Sep 23.  
PMID: 18812396 [PubMed - indexed for MEDLINE]  
[Related articles](#) [Free article](#) [Item in clipboard](#)

1524. [GabiPD: the GABI primary database--a plant integrative 'omics' database.](#)  
Riaño-Pachón DM, Nagel A, Neigenfind J, Wagner R, Basekow R, Weber E, Mueller-Roeber B, Diehl S, Kersten B.  
Nucleic Acids Res. 2009 Jan;37(Database issue):D954-9. Epub 2008 Sep 23.  
PMID: 18812395 [PubMed - indexed for MEDLINE]  
[Related articles](#) [Free article](#) [Item in clipboard](#)

Filter your results:  
All (1532)  
[Review \(15\)](#)  
[Free Full Text \(1532\)](#)

Find related data  
Database:

Search details

Recent activity  
Your browsing activity is e

### 4 - Export your Clipboard to file using the setting shown in the screenshot below. Click on 'Create File'. Choose a destination to save the resulting text file.

Display Settings: ☒ Summary, 20 per page, Sorted by Recently Added

Send to: ☒ Clipboard: 20 items

Clipboard: 20 [Remove all items](#)

1. [Association study designs for complex diseases.](#)  
Cardon LR, Bell JL.  
Nat Rev Genet. 2001 Feb;2(2):91-9. Review.  
PMID: 11253062 [PubMed - indexed for MEDLINE]  
[Related articles](#) [Remove from clipboard](#)

2. [Comparison of automated candidate gene prediction systems using genes implicated in type 2 diabetes by genome-wide](#)  
Teber ET, Liu JY, Ballouz S, Fatkin D, Wouters MA.  
BMC Bioinformatics. 2009 Jan 30;10 Suppl 1:S69.  
PMID: 19208173 [PubMed - indexed for MEDLINE]  
[Related articles](#) [Free article](#) [Remove from clipboard](#)

3. [Candidate gene identification approach: progress and challenges.](#)  
Zhu M, Zhao S.  
Int J Biol Sci. 2007 Oct 25;3(7):420-7. Review.  
PMID: 17999950 [PubMed - indexed for MEDLINE]  
[Related articles](#) [Free article](#) [Remove from clipboard](#)

4. [ToppGene Suite for gene list enrichment analysis and candidate gene prioritization.](#)  
Chen J, Bardes EE, Aronow BJ, Jegga AG.  
Nucleic Acids Res. 2009 Jul 1;37(Web Server issue):W305-11. Epub 2009 May 22.  
PMID: 19465376 [PubMed - indexed for MEDLINE]  
[Related articles](#) [Free article](#) [Remove from clipboard](#)

5. [ENDEAVOR update: a web resource for gene prioritization in multiple species.](#)  
Tranchevent LC, Barriot R, Yu S, Van Vooren S, Van Loo P, Coessens B, De Moor B, Aerts S, Moreau Y.  
Nucleic Acids Res. 2009 Jul 1;36(Web Server issue):W377-84. Epub 2008 May 28.  
PMID: 18508807 [PubMed - indexed for MEDLINE]  
[Related articles](#) [Free article](#) [Remove from clipboard](#)

Choose Destination  
☒ File ☐ Collections  
☐ E-mail ☐ Order

Download 20 items.  
Format  
MEDLINE  
Sort by  
Recently Added

Filter your results:  
All (1532)  
[Review \(15\)](#)  
[Free Full Text \(1532\)](#)

Find related data  
Database:

Search details

Recent activity  
Your browsing activity is e

## III. Import references to Endnote

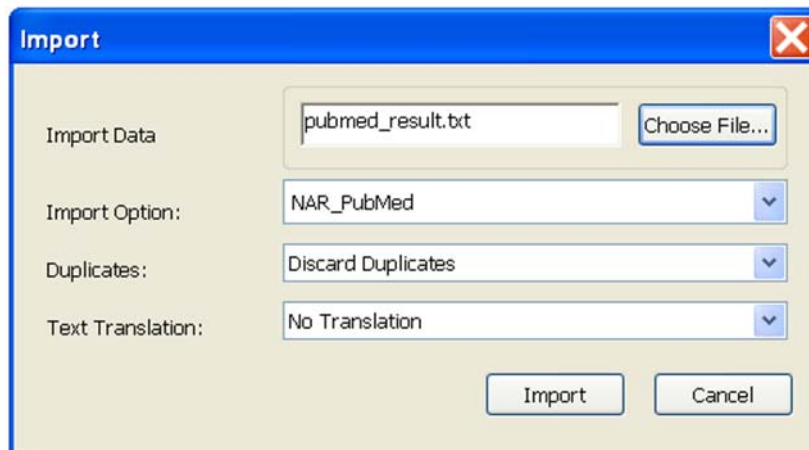
5 - Open Endnote. Your default library will open automatically. Close it. In the toolbar, click on 'File', then 'New'. Give a name to your new Endnote library and save it in the desired location.

6- Still in Endnote, click on 'File', then 'Import'.

- Import Data, choose the text file that you downloaded in step 4;

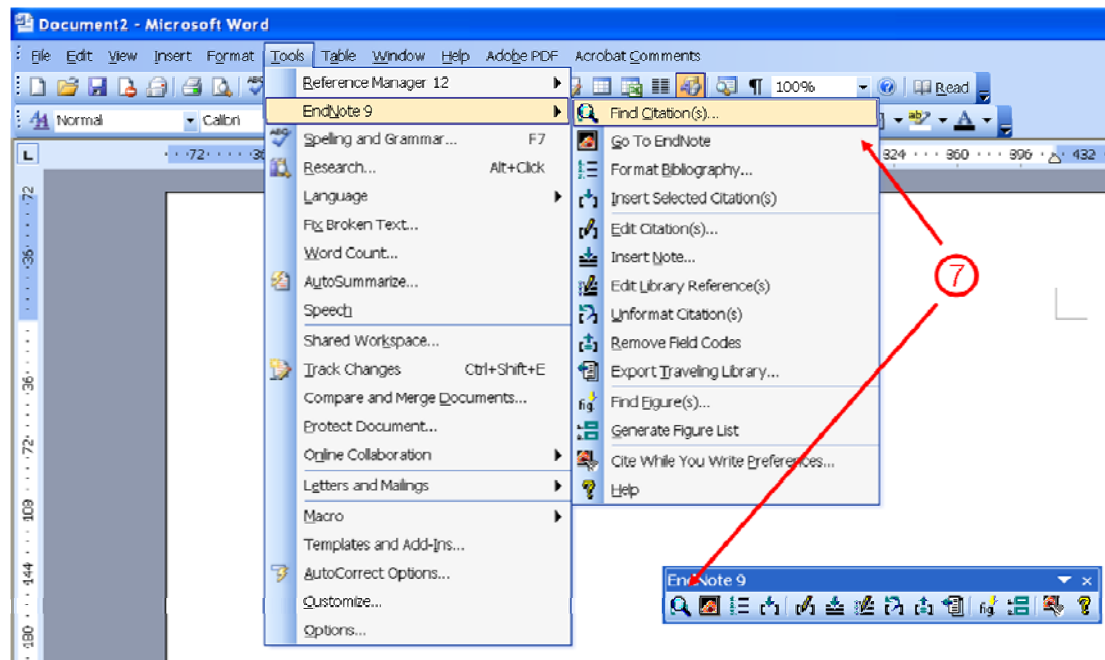
- Import Option, Choose 'Other Filters' and scroll down the list until you find the filter 'NAR\_PubMed'. Select this filter and click 'Choose';
- Duplicates: choose the 'Discard Duplicates' option;
- Text Translation: choose the 'No Translation' option;

Click 'Import'.

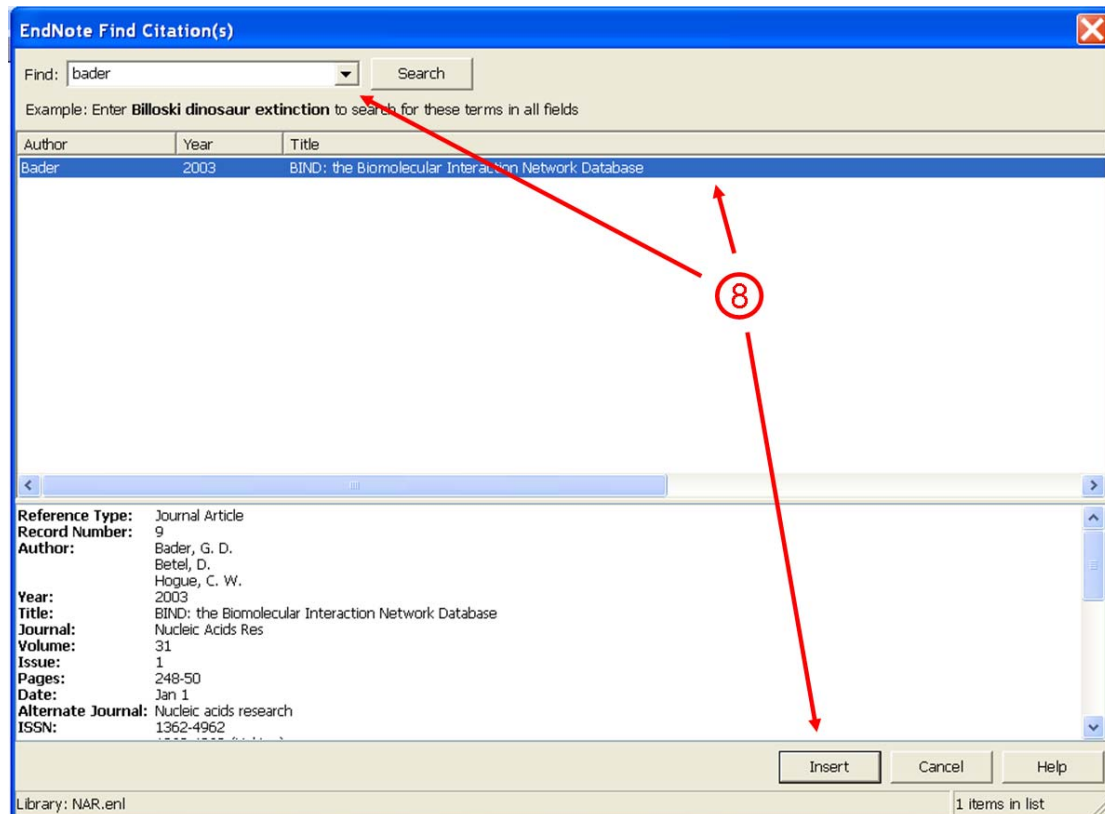


#### IV. Format bibliography in Word

7 - Open a NEW Word document, NOT your manuscript. Click on 'Tools', then 'Endnote' and 'Find Citation'. Alternatively, you can use the Endnote toolbar.

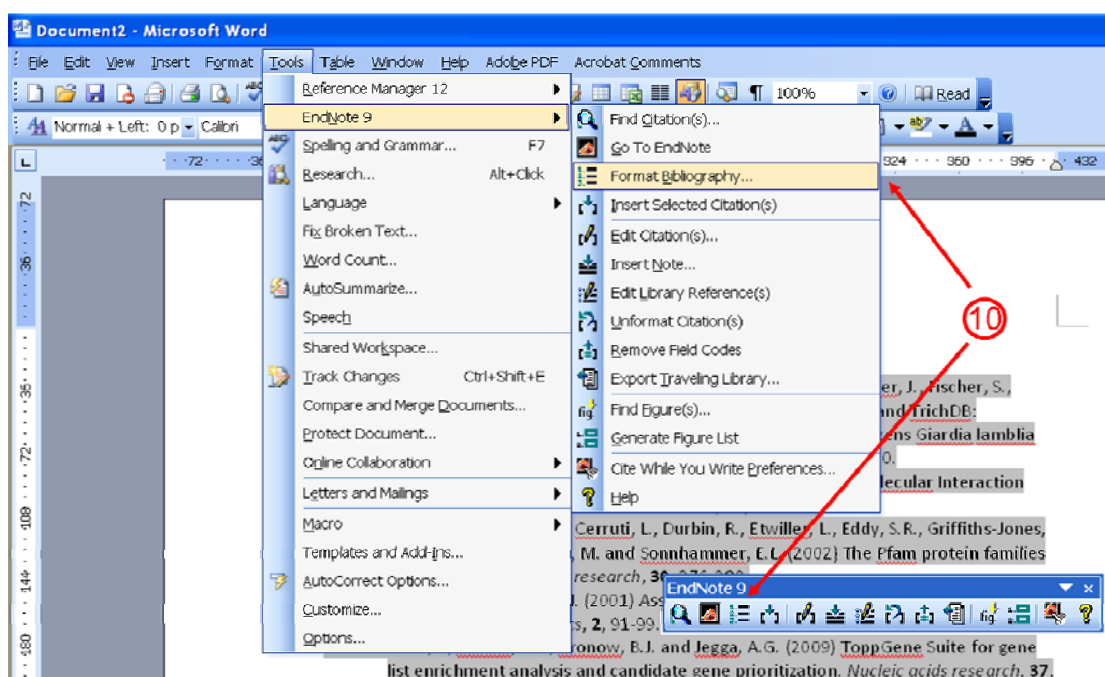


8 - Using the EXACT same order as in your original manuscript reference list, search for the first reference in your list by entering the first author's surname in the 'Find' field. Click 'Search'. Relevant references will be listed in the field below the search field. Highlight the reference that you were looking for and click 'Insert'.



9 - Repeat step 8 for all your references.

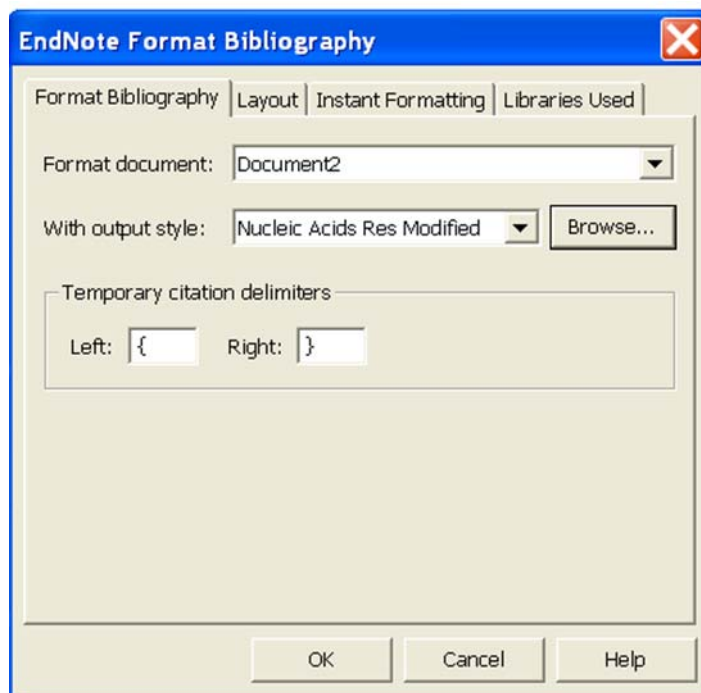
10 - In Word, click on 'Tools', then 'Endnote' and 'Format Bibliography'.



11 - In the 'Format Bibliography' window, select the 'Format Bibliography' tab.

- Format document: the name of your current document should appear there;
- With output style: click 'Browse' and scroll down the list until you find the style 'Nucleic Acids Res Modified'. Select this filter and click 'OK';
- Temporary citation delimiters: leave this untouched.

Click 'OK'.



11 - Your reference list should look like the screenshot below. All references should have a PubMed link. Some references will also include a PubMed Central link and/or a doi link.

(1-20)

1. [Aurrecochea, C.](#), [Brestelli, J.](#), [Brunk, B.P.](#), [Carlton, J.M.](#), [Dommer, J.](#), [Fischer, S.](#), [Gajria, B.](#), [Gao, X.](#), [Gingle, A.](#), [Grant, G. et al.](#) (2009) [GiardiaDB](#) and [TrichDB](#): integrated genomic resources for the eukaryotic protist pathogens [Giardia lamblia](#) and [Trichomonas vaginalis](#). *Nucleic acids research*, **37**, D526-530.  
<http://www.ncbi.nlm.nih.gov/pubmed/18824479>  
<http://dx.doi.org/10.1093/nar/gkn631>  
<http://www.ncbi.nlm.nih.gov/pmc/articles/PMC2686445>
2. [Bader, G.D.](#), [Betel, D.](#) and [Hogue, C.W.](#) (2003) [BIND: the Biomolecular Interaction Network Database](#). *Nucleic acids research*, **31**, 248-250.  
<http://www.ncbi.nlm.nih.gov/pubmed/12519993>  
<http://www.ncbi.nlm.nih.gov/pmc/articles/PMC165503>
3. [Bateman, A.](#), [Birney, E.](#), [Cerruti, L.](#), [Durbin, R.](#), [Eweller, L.](#), [Eddy, S.R.](#), [Griffiths-Jones, S.](#), [Howe, K.L.](#), [Marshall, M.](#) and [Sonhammer, E.L.](#) (2002) [The Pfam protein families database](#). *Nucleic acids research*, **30**, 276-280.  
<http://www.ncbi.nlm.nih.gov/pubmed/11752314>  
<http://www.ncbi.nlm.nih.gov/pmc/articles/PMC99071>
4. [Cardon, L.R.](#) and [Bell, J.I.](#) (2001) Association study designs for complex diseases. *Nature reviews. Genetics*, **2**, 91-99.  
<http://www.ncbi.nlm.nih.gov/pubmed/11253062>  
<http://dx.doi.org/10.1038/35052543>

12 - Save this document with the name 'NAR manuscript references with links'.

## **V. Submitting your manuscript to NAR**

13 - In the NAR manuscript submission system, in step 6 'File Upload', upload all your manuscript files (text, figures, tables, supplementary material etc...) as normal. Now upload the reference file that you have just created under file designation '1. Manuscript file'.

Please note: your manuscript will therefore have two reference lists, the normal list following NAR style which does not have links AND the additional list which does not follow NAR style but includes the links. Only the first list will be sent to Production if your manuscript is accepted.

DO NOT use the modified Filter and Style file to submit another manuscript to NAR. These were designed specifically for the Web Server issue.

14 - Review and submit your manuscript.